

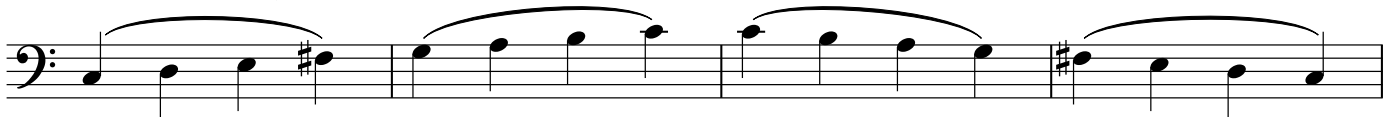
L.I.M.D.A.P.L. Mode Routine

Mike Block

www.MikeBlockMusic.com

(c) 2015 for ArtistWorks.com Online Cello School

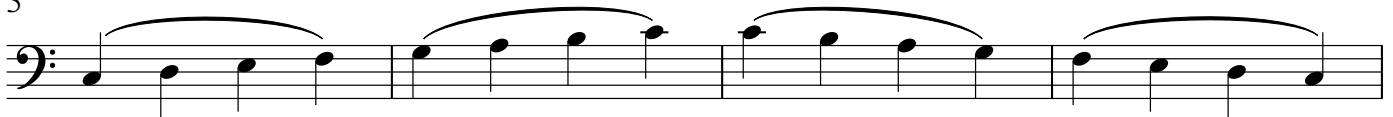
LYDIAN: Major Scale with a #4



Associated IV Chord: CMaj7#11

Lydian is the 4th Mode of the Major Scale, so C Lydian is comprised of the same notes as G Major.

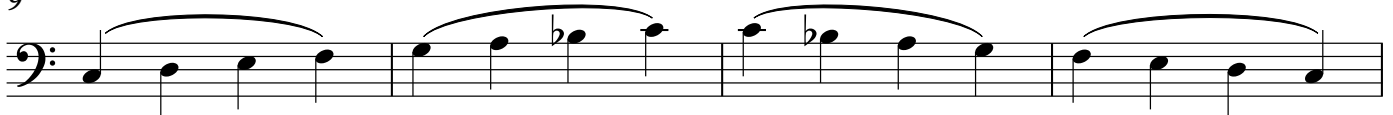
5 IONIAN: Major Scale



Associated I Chord: CMaj7

Ionian is the Root Mode of the Major Scale, so C Ionian is comprised of the same notes as C Major.

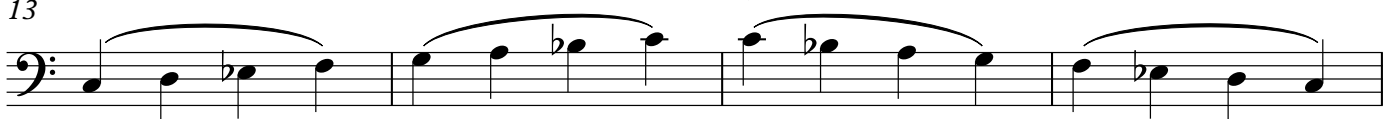
9 MIXOLYDIAN: Major Scale with b7



Associated V Chord: C7

Mixolydian is the 5th Mode of the Major Scale, so C Mixolydian is comprised of the same notes as F Major.

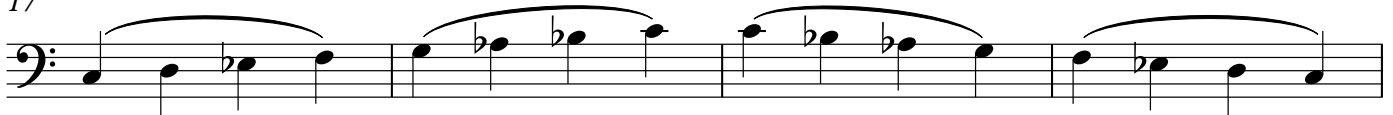
13 DORIAN: Natural Minor Scale with #6, or Major Scale with b7, b3



Associated ii Chord: Cm7

Dorian is the 2nd Mode of the Major Scale, so C Dorian is comprised of the same notes as Bb Major.

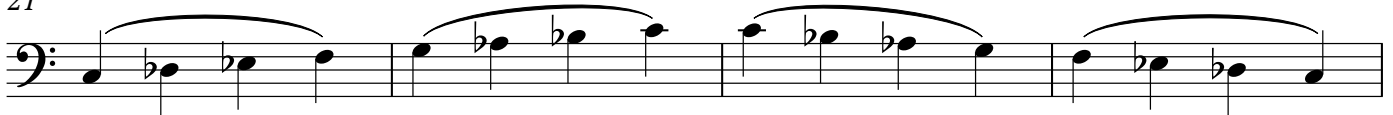
17 AEOLIAN: Natural Minor Scale, or Major Scale with b7, b3, b6



Associated vi Chord: Cm7

Aeolian is the 6th Mode of the Major Scale, so C Aeolian is comprised of the same notes as Eb Major.

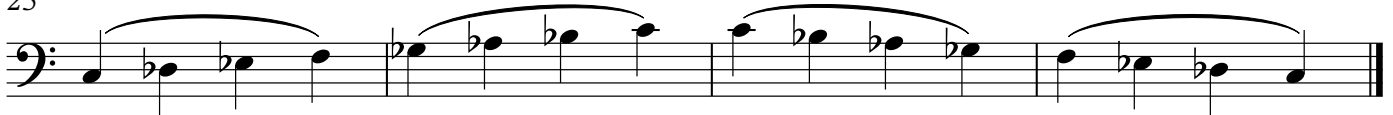
21 PHRYGIAN: Natural Minor Scale with b2, or Major Scale with b7, b3, b6, b2



Associated iii Chord: Cm7

Phrygian is the 3rd Mode of the Major Scale, so C Phrygian is comprised of the same notes as Ab Major.

25 LOCRIAN: Natural Minor Scale with b2, b5, or Major Scale with b7, b3, b6, b2, b5



Associated vii Chord: Cm7b5

Locrian is the 7th Mode of the Major Scale, so C Locrian is comprised of the same notes as Db Major.